

THE KENT *Connection*

A Social Publication for the Residents of Kent • September 2017



ROXANNE FLEMING
ATOP MOUNT KILIMANJARO!

Your Stories. Your Photos. Your Community!

COMPASS

Compass is the Exclusive Proud Sponsor of the 5th Annual Palisades Village House Tour

Saturday, October 14, 2017 | 11am - 4pm

Ticket sales are open now

To learn more and purchase tickets: visit palisadesvillage.org or call 202.244.3310



Brian Smith
Realtor® DC
202.412.4668
briansmith@compass.com



Daniel Hynes
Realtor® DC/MD
202.841.1694
daniel@compass.com

IMPORTANT PHONE NUMBERS



www.n2pub.com

© 2017 Neighborhood Networks Publishing, Inc.

UTILITIES

- 202.833.7500 Electrical Emergency
- 202.612.3400 Water & Sewer Emergency
- 800.752.7520 Gas Emergency
- 202.737.4404 Trash
- 202.645.8245 Recycling

LOCAL

- 202.444.2000 Georgetown University Hospital
- 202.537.4000 Sibley Memorial Hospital
- 301.896.3100 Suburban Hospital
- 911 Emergency
- 800.222.1222 Poison Control
- 202.727.9099 D.C. Metropolitan Police
- 202.715.7300 D.C. Police Second District
- 202.673.3229 Fire Department
- 202.282.3139 Palisades Public Library
- 202.576.6664 Animal Shelter
- 202.727.1980 D.C. Mayor's Office
- 202.282.2186 Palisades Community Center

SCHOOLS

- 202.282.5885 Board of Education
- 202.282.0113 Francis Scott Key Elementary School
- 202.282.2016 Horace Mann Elementary School
- 202.282.0100 Alice Deal Middle School
- 202.282.0120 Wilson High School
- 202.337.1412 Our Lady of Victory Catholic School
- 202.342.2805 St. Patrick's Episcopal Day School
- 202.337.3554 The River School

OTHER

- 800.325.7245 MARC Train
- 800.435.9294 BWI Airport
- 703.417.2700 Ronald Reagan Airport
- 703.572.2700 Dulles Airport
- 202.789.7000 Washington D.C. Convention & Tourism

AREA DIRECTOR Sarah Taylor | 240.204.4336 | sarah.taylor@n2pub.com

PHOTOGRAPHER  www.andreajosephphotography.com

CREATIVE TEAM N2 Publishing Design Team

CONTRIBUTORS



DISCLAIMER: Any articles included in this publication and/or opinions expressed therein do not necessarily reflect the views of N2 Publishing but remain solely those of the author(s). The paid advertisements contained within *The Kent Connection* magazine are not endorsed or recommended by N2 Publishing or the publisher. Therefore, neither N2 Publishing nor the publisher may be held liable or responsible for business practices of these companies. NOTE: When community events take place, photographers may be present to take photos for that event and they may be used in this publication.

MedStar Georgetown University Hospital

Doug Meyer
CyberKnife patient
Eight years cancer-free

Treating Prostate Cancer: 5 vs. 40 Treatments

Traditional radiation treatment for prostate cancer involves 40 treatments. With CyberKnife, you need only five treatments.

CyberKnife destroys tumors using targeted radiation, and because it is so precise, there is minimal damage to surrounding healthy tissue.

To schedule an appointment, call 855-546-1719. Visit MedStarGeorgetown.org/KC to learn more about Doug's story.



This section has been created to give you easier access when searching for a trusted neighborhood vendor to use. Take a minute to familiarize yourself with the businesses sponsoring your newsletter magazine.

These local businesses are proud to partner with you and make this magazine possible. Please support these businesses and thank them for supporting your community!

AIR DUCT AND DRYER VENT CLEANING

A Vent Expert
(703) 999-4505
www.aventexpert.com

ARCHITECT / BUILDER

Wentworth, Inc.
(240) 395-0705
www.wentworthstudio.com

BUILDER / CUSTOM HOMES

AR Custom Builders
(202) 257-0821
arcustombuilders.wixsite.com

CHIMNEY CLEANING / DRYER VENT CLEANING

A Vent Expert
(703) 999-4505
www.aventexpert.com

CLEANING

The Maids
(301) 562-8900
www.maids.com

DENTISTRY / COSMETIC, FAMILY, AND GENERAL

Revive Dentistry
(202) 363-3399
www.revivemetoday.com

DOG TRAINING

Dog Latin Dog Training
(202) 412-0708
www.doglatindogtraining.com

EYE CARE, LASIK, DERMATOLOGY & COSMETIC

Eye Doctors of Washington
(301) 215-7100
www.edow.com

HEATING / COOLING & GEOTHERMAL

Harvey W. Hottel, Inc.
(301) 921-9599
www.harveyhottel.com

HOME REMODELING AND HOME IMPROVEMENT

Hopkins & Porter Construction, Inc.
(301) 840-9121
www.hopkinsandporter.com

HOSPITAL

MedStar Georgetown University Hospital
(703) 558-1598
www.medstargeorgetown.org

HOSPITAL & MEDICAL SERVICES

Sibley Memorial Hospital
(202) 243-2347
www.sibley.org

INSURANCE AUTO-HOME-BUSINESS

Weaver Bros. Insurance
(301) 986-4415
www.weaverbros.com

INSURANCE - AUTO - HOME

Geico
(800) 841-2964
www.geico.com

INTERIOR DESIGN

Perceptions Interiors
(202) 330-5619
www.perceptionsinteriors.com

LIGHTING DESIGN

Associated Designers
(202) 363-2867
www.associateddesigners.com

METAL PLATING / RESTORATION

Metro Plating and Polishing
(301) 493-4009
www.metroplating.com

NAIL / BEAUTY

Acqua Nails
(301) 320-6245

ORTHODONTICS - ADULTS & CHILDREN

Georgetown Orthodontics
(202) 333-2200
www.gtownortho.com

PAINTING AND RESTORATION

The David Mahoney Painting Co.
(866) 967-6711
www.mahoneypainting.com

PEST CONTROL SERVICES

Mosquito Mikes
(571) 257-4579

PHOTOGRAPHY

Andrea Joseph Photography
(301) 922-3446
www.andreajosephphotography.com

PRE-SCHOOL / CHILDCARE

Westmoreland Children's Center
(301) 229-7161
www.wccbethesda.com

PROFESSIONAL ORGANIZER

Neat Method
Ashley Hatcher
(713) 303-4066
www.neatmethod.com

REAL ESTATE

Susie Maguire / Washington Fine Properties
(202) 841-2006

REAL ESTATE AGENT

Brian Smith / Compass
Brian Smith
(202) 412-4668

REALTOR

Sam Sheibani / Central Properties
(202) 573-7171

RESTAURANT

Millie's Restaurant
4866 Massachusetts Avenue, NW
Washington, DC 20016
(202) 733-5789
www.milliesdc.com

RESTAURANT & CATERING

Et Voila
5120 MacArthur Blvd.
Washington, DC 20016
(202) 237-2300
www.etvoiladc.com

RESTAURANT / DELI

Wagshal's
4845 Massachusetts Ave., NW
Washington, DC 20016
(202) 363-0884
www.wagshals.com

SENIOR LIVING

Maplewood Park Place
(301) 530-0500
www.maplewoodparkplace.com

TREE SERVICES - CERTIFIED ARBORIST

Bartlett Tree Experts
(301) 881-8550
www.bartlett.com

TUTORING / TEST PREP

Eagle Eye Tutoring
(301) 312-8863
www.eagleeyetutoring.com

TUTORING: READING - MATH

Kumon of Bethesda-Brookmont
(301) 272-2233
www.kumon.com / bethesda-brookmont.com

VETERINARIAN

City Paws Animal Hospital
(202) 232-7297
www.citypawsanimalhospital.com

VETERINARY CLINIC

Palisades Veterinary Clinic
(202) 363-1316
palisadesveterinaryclinic.com

Thank You To All These Fine Sponsors For Making *The Kent Connection* Possible.

Please Remember To Utilize Their Services!



New to the Neighborhood?

Please send a note to sarah.taylor@n2pub.com so we can welcome you!

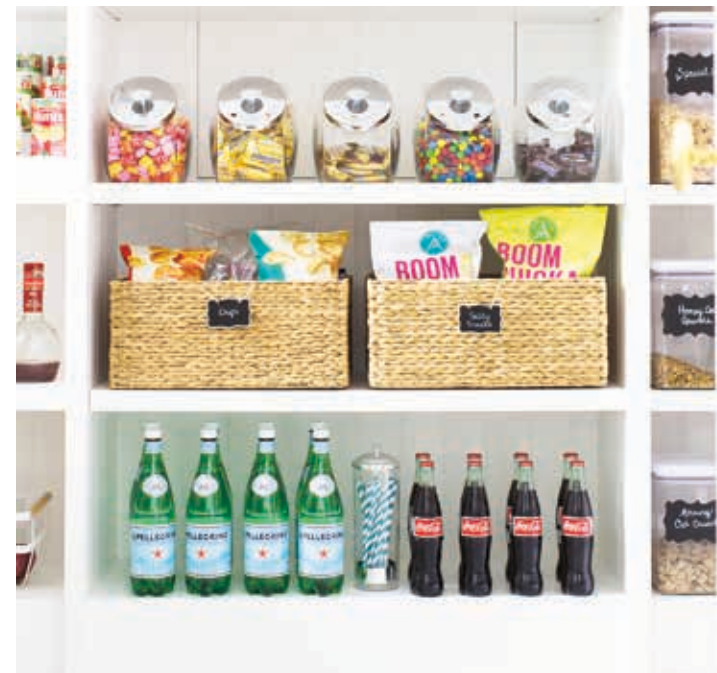
publisher's note

Dear Kent RESIDENTS,

"September days are here, with summer's best of weather and autumn's best of cheer!" (Hilaire Belloc)

It is hard to believe that Fall is just around the corner. Labor Day means the pool closes for another season and we put away our "summer whites." No matter our age, September always seems to bring with it a back-to-school feeling. For the kids, it stirs excitement as they reconnect with friends, embark on their fall sports and take on new challenges. For adults, there is a little anxiety as those lazy days of summer come to a close, and the whirlwind of carpools, homework, lots of school activities and business travel are upon us once again.

In this issue of *The Kent Connection*, take a moment to look at the Palisades 4th of July parade pictures and reflect on the good times you had this summer. Be sure to read about Roxanne Fleming and her climb to the top of Mount Kilimanjaro, the highest mountain in Africa and the tallest freestanding mountain on earth. We also introduce you to Helen Lewis, a Kent resident with a certain joie de vivre and our athlete and young achiever, rising St. Albans' C Former, Charles Clark. Learn about the new houses that are being built on Garfield Street, a joint project with resident Aydin Hayri and AR Custom Builders, share in the neighborhood tribute to beloved postman Frank Miner and join us in saluting resident John Giacomini for his appointment to the DC Commission on Aging as a Commissioner for Ward 3.



Back To School!

For those of you who are new to the neighborhood, the purpose of *The Kent Connection* is to help build community by sharing stories about families, adults, young achievers and athletes, pets, businesses, events, homes, gardens and more. We want the publication to reflect Kent's unique appeal and the individuals who live here. As a community member, you can help improve *The Kent Connection* every month. We want to make the magazine relevant, helpful and fun! Please feel free to send your comments and your stories to sarah.taylor@n2pub.com. We are assembling a team of additional contributors, so please consider becoming part of *The Kent Connection*.

Of course, *The Kent Connection* would not be possible without our business partners. Please refer to our sponsor index of fine companies when in need of a service and be sure to thank them for their support of your neighborhood newsletter.



With warm regards,

Sarah Taylor
Publisher
The Kent Connection
sarah.taylor@n2pub.com
240-204-4336



:: HOME ORGANIZING / MOVES & RELOCATIONS ::

- Attics | Bathrooms | Closets | Garages
- Home Office/Den | Kitchens & Pantries
- Laundry Rooms | Mudrooms | Kids Rooms
- Storage Areas

ASHLEY HATCHER :: Professional Organizer
301.417.8310 | ashleyh@neatmethod.com
www.neatmethod.com

Building Exquisite Homes in Kent!

AR Custom Builders presents an instant classic at 5031 Garfield Street NW, featuring exceptional attention to detail.



Resit combines his 20 year experience in construction with his background in economics to create value for home buyers. Modern day construction is like playing with play dough. I can mold it and shape it as I can dream of it.



Call today to learn more about how we can work together to create your own personal haven!

(301) 793-2953

www.ARCustomBuilders.wixsite.com/arcustombuilders

Helen P. Lewis;

Kent Resident With A Marvelous Joie De Vivre

meet your neighbors

By Resident Writer, **John Giacomini**

When Helen moved into her Cape Cod style home on Kingle Street NW, she knew that it needed immediate attention and renovation. Rolling up her sleeves, she set to work to redesign the interior and the exterior which included tearing down walls, jack hammering the concrete walkway, gutting the main bathroom, and creating a wonderful open living area on the first floor. The flow from the hallway to the beautifully furnished living room to the up-to-date kitchen to the family room is easy, welcoming and comfortable. The family room has expansive window walls that look out on redesigned and attractive gardens and allows the outside to be brought inside, so to speak.

As President of Connect Resource Group, Helen sources and provides top IT talent to companies in the DC Metro area including banks, educational institutions, healthcare groups, government and regulatory agencies and telecom companies. Helen has six employees who work remotely. Companies or groups often need assistance to resolve problem situations which involve finding the



Helen Lewis

LET YOUR LIGHT SHINE
"Good Lighting Unifies Objects & Harmonizes Space"
 -Ann H. Bissell, Owner & Principal Designer
ASSOCIATED DESIGNERS
LIGHTING DESIGN

Interior and Exterior Lighting Design Consultation
 & Installation for Over 35 Years

www.associateddesigners.com
 202/213-2444



right person to fill an important vacancy, with an emphasis on very specific talents and experiences. Helen brings to the various situations she deals with, a needed tenacity and analytical skills to meet the goals of the contractors. She has survived and thrived in environments characterized by severe competition. Also, she has honed her skills and outlook in prior jobs as a graphic artist and as manager of a chain of retail stores.

Helen is a seasoned traveler who has visited countries in Europe, the Far East, South America and has been to Iceland and Hawaii. In fact, she lived in France for about a year after graduate school. Helen speaks French and to the point where Parisians have complimented her on her accent and ability to easily carry on a conversation.

Helen's interests also extend into modern music and, of course, the care of her almost-human dog that has a great desire to talk! Both owner and dog complement each other with their outgoing and positive personalities!



What does Helen like about Kent? Various factors. She loves the proximity to cultural events, to venues in DC, Maryland, and Northern Virginia. Helen feels blessed to live "close enough to hip and happening" while enjoying the benefits of living in a wonderful residential neighborhood in a little Cape Cod with a garden and a dog. It is also fertile ground for business contacts. She utilizes and loves the Palisades-Kent list serve and her close association with welcoming, kind and interesting neighbors, many now good friends.

Helen is a first rate raconteur and a great conversationalist—which contribute directly to her personal and business successes.



Are you new to the area? The best way to meet people is a Meet Your Neighbors feature story. Reach out to Sarah today - sarah.taylor@n2pub.com



Et Voila!

Award-Winning Belgian Restaurant

COME CHECK OUT OUR NEW MARKET

You will be able to find a variety of imported products including oil, vinegar, dry meats, spices, waters and cheeses; some organic products from Path Valley Amish Farm in Pennsylvania such as honey, butter, maple syrup and herbs

Ask us about Catering!

(202) 237-2300

5120 MACARTHUR BLVD NW
 WASHINGTON DC 20016
WWW.ETVOILADC.COM

YOUR NEIGHBORHOOD BISTRO
 SERVING BRUNCH, LUNCH, AND DINNER

CLIMBING

By Roxanne Fleming

travel tales *Kili*

I never imagined that when I came home from my first trip to Africa I would (almost) immediately start making plans to return. It was a continent that fascinated me and I wanted to see and learn more about the different countries. My friend Rob Barbour, Managing Partner of Epic Private Journeys who led the Congo expedition I had just been on, knew of my passion for hiking and he suggested I return to climb Africa's highest peak, Mount Kilimanjaro.

At 19,341 feet, "Kili" (what mountaineers call it) is not only Africa's highest peak but also the planet's tallest freestanding mountain. My return to Africa would conquer two long-held goals: visiting Tanzania and climbing one of the "Seven Summits," the highest peak on each of the seven continents.

I signed up for the January hike to spend eight days on Lemosho, the most scenic route covering 37 miles to the top of Mount Kilimanjaro. Thirty thousand trekkers climb Kili annually; only 45% reach the top.

This is my summit story.

The Night Before the Climb:

I met my trekking companions, all Americans: three 30-something women, a 54-year-old man, his 26-year-old son and a 38-year-old experienced male hiker. Before dinner, we had a safety briefing led by our expedition leader, Ake, 39 (number of Kili summits: 60) and met our head guide, Daniel, 36 (Kili summits: 200-plus). We would also have a support team consisting of a 45-person mountain staff: three assistant guides, two camp crewmen, two cooks, and 38 porters. Climbing very slowly is the name of the game on Kili. We would learn very quickly the importance of "pole, pole" (Swahili



Camp

for "slow") to keep our breathing and heart rates down. I went to bed that night very excited and feeling good about my teammates. I was ready for the summit quest to begin.

Day 1: Distance Covered -- 4 Miles; Elevation -- 9,200 Feet

At 9:00 a.m. we drove 2 ½ hours to Kili's entrance, where porters weighed our bags on a scale. We then drove 40 minutes to the Lemosho gate and after lunch, we started to hike. This is one of my favorite feelings in the whole world — the start of an adventure that I have only read about and will now experience it on my own.

We trekked for three hours across four miles to Mt Mkubwa Camp. When we arrived, we were greeted by our support staff singing and clapping

to a Swahili song that we would soon learn to both sing and love.

Daily dinner, around 7:00 p.m., was always soup, a protein, a carb, vegetables and dessert.

Day 2: Distance Covered -- 6 Miles; Elevation -- 11,500 Feet

We awoke at 6:00 a.m. with tent-side service of chamomile tea, breakfast at 6:30, and we were on the trail at 7:00. The porters stayed behind dismantling camp but would pass us along the way only to reach our next site well before us and set up camp again. They are amazing young men that kept smiles on their faces and always had a word of encouragement along the way.

We trekked six hours across six miles through a beautiful juniper forest until



Kili



Made it!



Kili Team

•••

we reached 10,000 feet, at which point we entered into the heather zone. When we arrived at Shira 1 Camp (11,500 feet), we had our first glimpse of Uhuru Peak, Kili's summit. It was nice to sit, relax and hydrate with plenty of snacks and tea. Constant motto: "sippy, sippy." Our daily goal was to drink three liters of water and as many other fluids as possible. Hydration is key!

After dinner, the ritual of brushing your teeth can be one of the happiest of the day as you stand outside your tent, marveling at a magnificent sky and waiting for the inevitable shooting star.

Day 3: Distance Covered - 5 Miles; Elevation - 12,500 Feet

It is not always easy to take in your surroundings while hiking, especially when constantly gaining altitude. This is when you have to remind yourself to stop and look around. Today we hiked miles of mostly flat moorland with wiry green shrubs, spiky brown grass and large boulders. About half way through our trek to Shira 2 Camp, the landscape changed to brown and rocky as we climbed to the outer slopes up to 12,500 feet. It was sunny and the wind was cold. January is quiet and mostly trash-free on Kili, evidenced by few other trekkers on the trail.

Day 4: Distance Covered - 4 Miles; Final Elevation - 12,960 Feet

Motto for today: walk high, sleep low. Our 8 1/2 hour trek led us on a desolate trail with extreme temperatures (where neither flora nor fauna can survive) to Lava Tower, a volcanic plug at 15,800 feet where we had lunch. It was a welcomed stop and one for which all of us we were ready. The weather had been cool and cloudy on the way up, and as we descended to Barranco Camp at 12,960, we saw in the distance a city of tents encased in fog — our home for the evening.

Day 5: Distance Covered - 3 Miles; Final Elevation - 13,450 Feet

To climb a single-track, 843-foot rock face that requires the use of all limbs was our morning agenda. We awoke early to avoid any lines for the scramble up the ominous-looking Barranco Wall. I was really excited about this 1 1/2-hour climb that I had heard so much about. This kind of a climb is one of my favorites and proved to be everything I dreamed of. At the top, we had Nutella crepes, sausage, bacon and Snickers — at 13,800 feet. Then, in a 2-hour knee-jamming hike down to the Karanga Valley on slippery scree, we made our way to Karanga Camp at 13,450 feet.

At 6:00 p.m. we had a dress-rehearsal hike to prepare for the next night's summit. It was an important step for those of my teammates who had never made a summit bid before, and one in which I was only too happy to participate. Although I was feeling very comfortable and confident, I was not fool enough to think this would be an easy climb.

Day 6: Distance Covered - 3 Miles; Elevation - 15,744 Feet

After a 6 a.m. wake-up, we hiked across barren alpine desert for four hours. A sharp ascent then led to Barafu Camp at 15,100 feet. Most trekkers stay at Barafu. We, however, climbed a steep lava flow for another hour to High Camp, at 15,744 feet. A special permit is required to camp here, and we had one!

Our summit plan was to leave High Camp around midnight, from which it can take anywhere from 6-9 hours to reach the summit. Our mission was to get to the top ahead of the sunrise. When you reach that altitude you are not acclimatized, so at the top, you take your pictures and get down to a lower altitude quickly. The hike back to High Camp would take about three hours. After a rest, we would hike down to Millennial Camp (12,590 feet) to spend the night, and then end our trek with a half-day's walk down to the finish gate.

I actually slept pretty well that night.

Day 7: Distance Covered - 6 Miles; Elevation - 19,341 Feet

The wake-up call came at midnight. We had a quick breakfast of porridge and energy bars. Our headlamps were on and we layered our clothing for the elements — and at 12:40 a.m. we hit the trail under a star-filled sky with nothing but promise for a beautiful sunrise.

We took off in our usual formation, Daniel at the head and my teammates in place, a line-up that had occurred for no particular reason over the week. We hiked up scree on an incline and climbed over boulders at times. Your headlamp illuminates only the step in front of you so caution is critical. The thin air has half the amount of oxygen as at sea level, so walking "pole, pole" is your only hope of reaching the top.

The 5 1/2-hour climb went by in a blur, but I can still remember the zero-degree air and my concentration on just putting one foot in front of the other...and I will never forget the taste of hot tea that the six of us sipped out of our guides' thermos bottles at the crater's rim, Stella Point, at 18,171 feet.

As I climbed the last 170 feet, I had the euphoria of success, knowing I was just about to stand on Africa's rooftop, Uhuru Peak. It was 6:13 a.m. The sun rose at 6:34 a.m. It was one of the happiest and most beautiful sunrises I have ever seen.

For information on Epic Private Journeys' eight-day Lemosho trip up Kilimanjaro, please visit www.epicprivatejourneys.com.



Hopkins & Porter...Celebrating 40 Successful Years!



If You Can Dream It, We Can Design & Build It

- Additions
- Remodeling
- Design/Build
- Custom Kitchens & Baths



301-273-7084
12944-C Travilah Road, Suite 204
Potomac, MD 20854



If Service & Quality Matter to You, Give us a Call.

METRO Plating & Polishing

M-F: 10-4pm
Saturday: 10-1pm
4110 Howard Avenue
Kensington, MD. 20895



Silver Restoration | Plating & Polishing | Lacquering | Metal Repair
Light & Lamp Restoration | Door & Household Hardware | Antique & Oil Rubbed Finishes

Metroplating1@gmail.com
www.metroplating.com
301-493-4009



More than just an insurance agency...
A Washington Tradition
*Providing Personal Service and Peace of Mind
For Over 75 Years*



"Please call me for a complimentary insurance review to see how I might provide you and your family the peace of mind you deserve."

Connie Talbott
Vice President
301-986-4115
ctalbott@weaverbros.com
or visit www.weaverbros.com

The David Mahoney PAINTING COMPANY

Uncompromised Quality

If you're looking for uncompromised quality, artisans in preparing and painting any surface, accountability, timelines and value, then the David Mahoney Painting Company is the company for you!

Contact us to receive a FREE consultation.

Custom Interior Painting • Custom Exterior Painting
Historic Restoration • Protective Coatings • Wall Coverings
Faux Finishes • Wood Staining
Drywall and Plaster Repair • Paint Removal • Deck Restoration
Roof Painting • Glass Replacement

1-866-967-6711
www.mahoneypainting.com



3 YEAR WARRANTY ON ALL WORK • BONDED AND INSURED

CALL NOW FOR A FREE ESTIMATE 301.562.8900

REFERRED FOR A REASON*



96% of our customers would recommend The Maids to friends and family. And that's saying something in this business. After all, you don't want just any maid service in your home.

Learn more at.....

www.themaidsmaryland.com



Making it better to serve you,
we are proud to announce our new hair salon,
Força, at our Sangamore Road location.

For our first time Kent customers, we are pleased to offer a
35% savings for hair services and 15% savings for nail services.

AcquaNails & Força Salon

Assurance • Consistency • Quality • And Uniquely Affordable

With two convenient locations to Kent and plenty of free parking at both!

4701 Sangamore Road, Bethesda • 301-320-6245 (nails), 301-320-9676 (hair)
1855 Wisconsin Avenue, Georgetown • 202-337-0865

athlete & young achiever
of the month

meet Charles Clark

Rising St. Albans' C Former And Lacrosse Player

Name: Charles Clark
Age: 9
School: Saint Albans
Sport: Lacrosse
Position: Long Stick Defense

How long have you participated in this sport? 5 years

What is your favorite teacher/mentor's name? Peter Stamos

Where do you normally practice? McLean, Virginia

Are you on a team? Yes, Madlax

Have you traveled anywhere related to this sport? Various cities around Maryland

What events have you participated in? Howard County regular spring season; fall and summer regional tournaments

What awards or honors have you won? McLean U9 League Champions Spring 2016

What do you like the most about the lacrosse? Running the ball up the field to the offense

What other activities do you participate in? Ice hockey, soccer, flag football, golf and tennis

How do you keep a balance between sports, school and other activities in your life? I make sure to do my homework before practice.



Attention athletes and young achievers. The Kent Connection would be proud to recognize you or someone you know in the neighborhood. If interested, please email sarah.taylor@n2pub.com



Charles Clark

SAT | ACT | SSAT | HSPT | AP Exams

In the Middle Ages, Europeans ate peony seeds to ease the mind. It didn't work. What does?

Working with the experts.

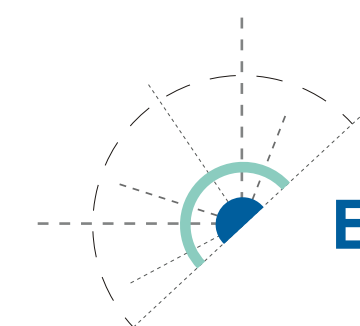
Leave home remedies in the dark ages.

Come see us instead.



7307 MacArthur Blvd
Bethesda, MD

301-312-8863



EAGLE EYE
tutoring

1-on-1 test prep & academic tutoring for students of all ages.

eagleeyetutoring.com

sponsor spotlight

by Adam Eisenstat

UNLEASHED in DC

A Master Builder, A Rare Breed
**Resit Gecgil, Owner of
AR Custom Builders,**
Is Razing The Blasé Conventions
Of Modern Construction—
One New House At A Time



Resit Gecgil, Owner, AR Custom Builders

They just don't build 'em like they used to, goes the oft heard mantra, especially among discerning home buyers and the design conscious; those who appreciate real craftsmanship and know "classic" when they see it. Even those who are less concerned with the niceties of architecture and construction usually know what they want, but find that in a city like Washington, an expansive budget doesn't necessarily mean expansive options.

Enter AR Custom Builders, an emerging standout in the area's fertile residential landscape. In its three-year existence, the agile, boutique firm has built close to a dozen new homes and condo units. Now focused exclusively on building in prime areas, the firm is currently developing a lot of three homes on Garfield Street which are due to hit the market soon.

Resit Gecgil, the owner and general manager of AR Custom Builders, has an unusually broad set of skills encompassing the many facets of construction management and design. He has an encyclopedic knowledge of the building trades coupled with wide-ranging experience in renovation and custom building. He is a rare breed in the world of contemporary homebuilding, where specialization rules the day, with architects, contractors, and sub-contractors each sticking to their respective domains; and houses are often built by committee. In contrast, Gecgil's is akin to a master builder; that old-world figure who



worked without architects and designers, and who had to be conversant in every facet of the builder's trade

Gecgil, of course, does work with architects and subcontractors, just like his fellow builders, but the breadth of his knowledge and experience allows him to manage every aspect of a project much more effectively. Consequently, AR Custom Builders operates in a way that sets it apart, with a focus on flexibility, innovation, craftsmanship and adherence to the classic principles of building such as balance, proportion and spatial awareness while at the same time being as cost efficient as possible. These values define the company's brand, highlight its distinctions, and also describe what it is that Gecgil does and the core thinking behind his work.



Resit supervising Garfield construction

Flexibility, for example, is a crucial factor in AR Custom Builders' unconventional approach to business and building. With his Kent project, for instance, one day he was inspecting the roof of one of the houses and realized that it offered an astounding view, so he decided right then to add a rooftop deck. Normally, such a move would be unthinkable; it would simply take too long—requiring lengthy consultations with multiple parties.

For Gecgil, flexibility and innovation go hand in hand. For his Kent project, Gecgil demonstrated what being an innovative builder means in the DC market, where land is scarce. In this case, it meant devising an engineering solution to fashion a custom space from a parcel of land deemed "unbuildable," owing to its difficult terrain.

"I understand the essentials of the business and of building. Most people have one or the other—they know how to build, but they don't know how to landscape," says Gecgil, explaining why he was able to meet the challenge and transform the uneven, sloping ground, in effect, sculpting the landscape and adapting the topography to his project.

Gecgil is in the real estate business, and the homes that he builds are conceived with an eye toward the market. Nonetheless, he is a true craftsman, compelled by his own standards of excellence and insistence on delivering "a job well done." "I build houses that I'd want to live in," he says.

Gecgil's skill and knowledge as a craftsman are rooted in classic design principles. These age-old standards regarding balance, proportion and volume, for example, complement one another with what seems to be a sort of indisputable logic.

"Everything in life should have balance, he says. "Like if you decide to use heavy trim, you need to make the ...



Resit (right) with Aydin Hayri, business partner and Kent resident



Garfield house (1 of 3) nearing completion



... colors contrast more, to smooth the transition between the walls and the doors. Or if you use too many windows for a room it will be too bright, but no windows or too few makes the space seem gloomy or isolated. Balance is what makes a house comfortable."

Adapting classic design principles to modern sensibilities is the fundamental idea behind what Gecgil does, and is manifested throughout his work. Sometimes it's evident in subtle ways, like using square columns instead of the traditional rounded ones for a doorway; or even by what is not there, like plastic, which Gecgil won't use in anything he builds, because it

cannot stand up to the elements, unlike brick, wood, stone.

"Whatever we decide to build and when we're actually doing it, we look at the essentials, which have been the same for thousands of years: the sun, the basics of proportion. ...You cannot build a house with a giant living room and a tiny kitchen. All the elements have to blend with each other."

The fact that Gecgil's grew up in Istanbul and spent his formative years as a builder is not incidental as to why he has developed such a rare combination of skills and knowledge, and the wherewithal to use them effectively. He started working in his uncle's construc-



tion business when he was 12, as a cashier, then at 16 took on a sort of junior CFO role: signing checks, buying materials.

"I started on the business side of construction, touching the money, which taught me that budgeting

is a discipline. It's everything, really. If you lose control of your budget, you lose control of your business."

Istanbul itself was also vital to Gecgil's development. "The older neighborhoods there resemble a jigsaw puzzle," he says, "You have to fight for every square inch, fitting into oddly shaped lots, building on foundations that have no drawings."

Beyond his experience building and renovating a variety of houses in his native city, there's an underlying influence that may have become evident only after he left. Gecgil's exposure to so many different types of architecture and his hands-on experience with them has contributed to making him the master builder that he is today.



Gecgil's AR Custom Builders is poised to make a serious impact in a market that, not so very long ago, may have been seen as a backwater. As housing prices rise, people naturally will expect more. Classic is something you can't fake, at least not when you're engaging an audience that not only knows what it wants but also understands why.



"Both of my pups have a major crush on Dr. Fischer. I know why! She is very genuine and I am so impressed by her wealth of knowledge. She just gave my pup Acupuncture, Laser and a Vitamin B shot and I can already see the difference. Thank you Dr. Fischer for being so awesome and wonderful to my Reggie and Zorro."

-Satisfied Customer

Fear Free Philosophy

Our approach removes as much anxiety and discomfort as possible from pets needing treatment. Here at PVC, your pet's comfort is important to us! Please ask us how we can help your pet actually enjoy the vet visit.



Choose the Right Vet for Your Pet!

Vaccinations • Spay/Neuter • Dentistry
House Calls • General & Orthopedic Surgery • Grooming
Acupuncture/Integrative Medicine • Cat Boarding

5138 MacArthur Blvd NW, Washington DC 20016
202.363.1316 • PalisadesVetClinic.com

Westmoreland

Children's Center



Come Grow with US
Serving the Community Since 1970

Limited space available

Call us to reserve a space!
Preschool and School-age programs
Available for the 2016-2017 School Year

Now touring for the 2017-2018 school year.
Please contact Clare Cahill to schedule a tour:
301-229-7161 or clare.cahill@wccbethesda.com

Three locations in Bethesda
301-229-7161
www.wccbethesda.com

Kent Resident Hosts Special Community Reception To Honor *Frank Miner*

By Resident Writer **John Giacomini**

in the neighborhood

The beautiful art-filled home of Jennifer Urquhart was the setting for a community-organized loving tribute to Frank Miner, a 32-year veteran of the postal service, who brought unusual dedication to the community he serviced and who is highly respected and regarded by one and all. The many tributes were impressive, and all of the more than 60 who attended were very much into the lively spirit that permeated the festivities.

One major tribute came from “your appreciative family” on the 5100 block of Fulton Street NW. It read: “To our dearest Mr. Miner, welcome to your new reality of when Neither snow nor rain nor heat nor gloom of night will interfere with your plans because...you are retired!!! Do you realize that almost all of the children growing up on this block only know you as the mail-man? Congratulations for all that you have achieved & helped us with...You will be missed more than you will know! And all those doggies will wonder...What happened to you? ...They will miss you, too. Wishing you the time of your life filled with good health, family, friends, lots of love, fun, adventure, travel & all your wishes coming true.” Those sentiments were echoed enthusiastically by all who participated. Frank was given a watercolor portrait done by Jan Fairbank and a wonderful miniature mail truck that included, inside, a substantial monetary gift. He also received many cards, notes, and other gifts.



Frank Miner



The banquet table featured a beautiful array of many delectables that had appeal for all tastes. One end was “anchored” by an enormous four-layer rich carrot cake with Frank’s photo in marzipan on top. Also, there were plenty of beverages to satisfy all desires. Both food and drink were easily available throughout the home.

Frank’s personable wife, Cheryl, is also retired from the U.S. Postal Service. They had planned to retire at the same time, but Frank decided to continue for another year or so. Before her career with USPS, Cheryl was a nurse. They have three children, a son and two daughters, and seven grandchildren. Their son is an IT Director at NIH, one daughter is involved in the food business as a trained baker, and the other daughter is a Global Product Marketing Director.

Frank and Cheryl also have a special interest in travel photography which Cheryl studied for a short time. This talent will be applied directly to their planned travel on a cruise to Key West and Cuba and on a trip to Disneyworld. Later they have plans for local travel such as spending some time in Ocean City, and then next year, a trip to the Far East and specifically to Thailand.

This heartwarming event conveyed the warmth and character of the community its interest in people who merit recognition. Surely many residents will keep in touch with Frank and Cheryl to hear about all that retirement has to offer them!



community connection

The 51st Annual Palisades Citizens Association 4TH OF JULY PARADE!

A Neighborhood Summer Memory!



attention
residents

THE KENT CONNECTION IS HIRING!



We are looking for an Editor/Content Director to help put this publication together each month. It could be someone you know or maybe it would be a great opportunity for you.

We need someone who knows the Kent community and loves helping neighbors get to know each other.

If you like people, like to write a little, have some computer skills, and you're organized, you

might just be the right person for the position. The role requires about 15-20 hours per month and the pay is not bad. Plus it's fun.

If you're interested, please send an email to sarah.taylor@n2pub.com and we can set up a time to meet, discuss the role and see if it's a fit.

Thanks,
Sarah



**SPECIALIZING IN
AWESOME BBQ
MADE TO ORDER FROM
ACROSS THE NATION**

**DELIVERY OR CARRY-OUT
(202) 350-9791**

Enjoy our BBQ specialties such as:

- SPANISH PORK RIBS
- LONE STAR PRIME BEEF RIBS
- TENNESSEE BBQ CHICKEN
- PORK SHOULDER SANDWICH
- "LUCKENBACH TEXAS" PRIME BRISKET
- "BROASTED" CHICKEN

**PITMASTERS BACK ALLEY BBQ
4818 (ALLEY) YUMA ST. NW, WASHINGTON, DC 20016**



The Ultimate Cooking Experience™

**WAGSHAL'S
AUTHORIZED BRONZE DEALER**

- Offering a Variety of Sizes
- Big Green Egg Charcoal
- Eggcessories
- Warranty Headquarters



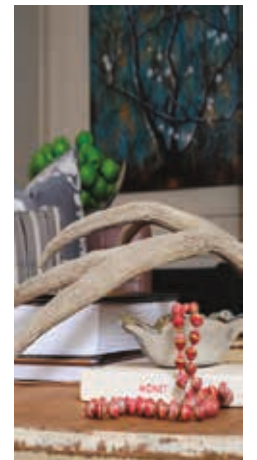
4845 Mass Ave NW
Washington, DC 20016
202-363-5698 ext. 2

The most versatile barbecue or outdoor cooking product on the market.



PERCEPTIONS INTERIORS.COM | 202.330.5619

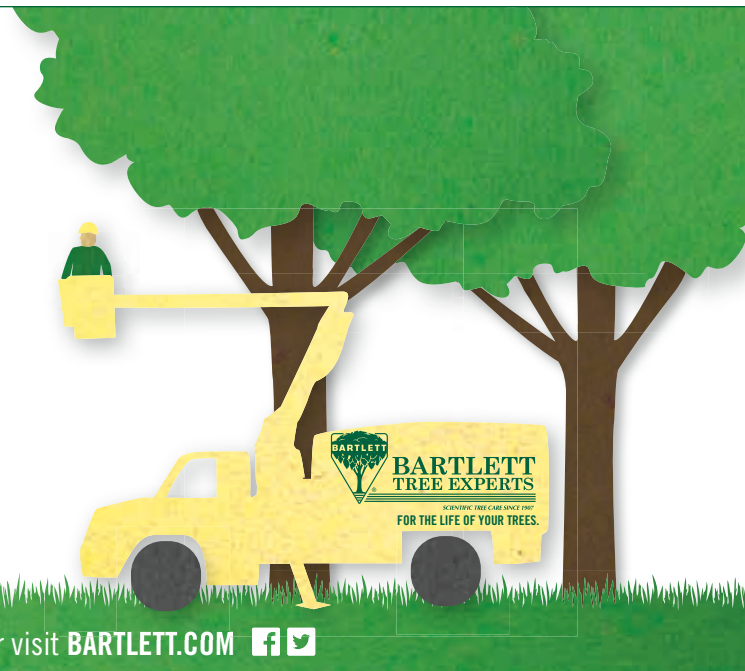
Design + Build • Renovation/Remodel • Full Scale Interior Design • Interior Staging • Color Palette Selection • Space Planning • Specification & Finishes • Window Treatments • Custom Cabinetry/Built-In's • Kitchen & Bath Design • Custom Furniture & Lighting • Space Organization



BEAUTIFUL TREES MAKE A HOUSE A HOME

We're Bartlett Tree Experts, a 100+ year old tree and shrub care company with global reach and local roots. We provide expert, attentive service, a safety-first record and a range of services that includes:

- Tree & Shrub Pruning
- Fertilization & Soil Care
- Cabling & Bracing
- Insect & Disease Management



Call 301.881.8550 or visit BARTLETT.COM





GEORGETOWN ORTHODONTICS

4434 MacArthur Blvd. NW Suite #201 • Washington, DC 20007
202-333-2200
www.gtownortho.com

invisalign teen **invisalign**

DAMON SMILE
More than straight teeth™

AAC Member American Association of Orthodontists
My Life. My Smile. My Orthodontist.®

Dr. Maya V. Oliver

- Damon Braces
- Clear Braces
- Invisalign
- Zoom Whitening
- Children & Adults
- Insurance Accepted
- Digital Xrays (Low Radiation)
- Propel



Eye Doctors of Washington

ENHANCING WASHINGTON'S VISION FOR OVER 50 YEARS

The Leading Providers of Eye Surgery and LASIK in the Washington D.C. Area

Join the "20/20" Club!

- Lasik
- Cataracts
- Eye Conditions
- Aesthetics
- Glaucoma
- Pediatrics

Offering Convenient Weekend & Evening Hours, Same Day – Emergency Appointments

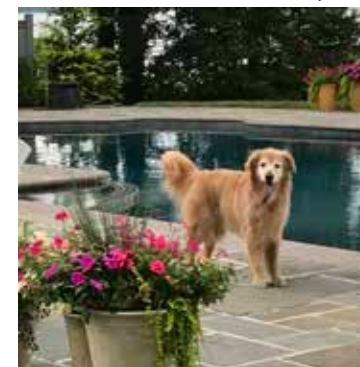
Call 1 844-260-0212 to schedule a Free Consultation to see if You Are a Lasik Candidate! www.edow.com

CHEVY CHASE • TYSONS CORNER • NORTH PARK • WASHINGTON, DC

Most Major Insurance Accepted

Meet Santana,

A LOVABLE GOLDEN



beignet's precious pals



Beignet: Hello there Santana. May I call you Santa?

Santana: I don't think so. While I often bring my family presents, usually of the smelly variety and I love the snow, I prefer to be called Santana. It has a certain ring to it that makes my tail to wag.

Beignet: Ok, Santana it is. Tell me about yourself.

Santana: Well, first of all, I love to eat, sleep and go on walks. And second, of all, I have a great coat of hair. It's thick, soft and beautiful.

Beignet: That's nice. You are just like most of the other dogs I run across in the neighborhood. Can you tell me something that makes you unique?

Santana: Sure, I have a very melodious bark and I am completely house broken. I haven't made a mistake in years.

Beignet: That's nice too, but what I am looking for is a certain personality trait or experience you've had that would cause our readers to think wow Santana is amazing.

Santana: Ok...How about this? I can always find the place where I buried a dog bone and I love to chase squirrels.

Beignet: Mmm, that's nice too and I suppose you love to curl up beside your family by a warm fire while they watch a movie?

Santana: Gosh, how did you know?

Beignet: I get around! Let's try this. Why are you named Santana?

Santana: One of the boys in my family idolized the Washington Redskins receiver named Santana Moss, so I was given his name. Most people think I was named after Carlos Santana, the musician, but it's not the case.

Beignet: I suppose your name makes you a little unique.

Santana: Beignet why don't you tell your readers I'm unique because I have lived an incredibly special life with an incredibly

special family, in an incredibly special home and I have given them all my love and they have returned their love to me. It may not make headlines, but these days love is always a wonderful thing to hear about.

Beignet: It sure is. Thanks for the journalism lesson and I hope to see you around the fire hydrant sometime.



Hello fellow Kent pets. I would like to meet you. Please email my publisher sarah.taylor@n2pub.com so that we can get introduced. Thanks, Beignet

DOG LATIN DOG TRAINING



"LEARN SUM.
REWARD US.
REPEATIS."

Offering in-home private tutoring and puppy classes at Kenwood Animal Hospital

doglatindogtraining.com
202.412.0708

THINKING OF SELLING YOUR HOME?
ASK ME HOW YOU CAN GET A \$10,000 CREDIT!



SAM SHEIBANI
202.573.7171
WWW.PICKSAM.COM

Disclaimer: Up to \$10,000 in listing credit on a sliding scale for listings starting at \$1 million.



One in three D.C. families has to choose.

Help Sibley Memorial Hospital and DC Diaper Bank provide clean diapers to families in need.

DROP DIAPERS OFF AT **SIBLEY'S BUILDING B WELCOME DESK** OR DONATE AT **DCDIAPERBANK.ORG**.



Keep Labor Day Healthy With Grilled Chicken Paillards & Peach Arugula Salad

Ingredients

2 pounds chicken breasts, pounded 1/16-inch-thick

1/4 cup lemon juice

1/4 cup extra-virgin oil

4 teaspoons minced garlic

Kosher salt and ground black pepper

8 cups baby arugula

4 large peaches, thinly sliced

1/2 cup fat-free plain Greek yogurt

1/4 cup light mayonnaise

2 ounces finely crumbled blue cheese

1 cup chopped toasted walnuts

Directions

1. In a large zip-close plastic bag, combine the chicken with the lemon juice, olive oil, garlic, 1 teaspoon of salt and several grindings of pepper. Mix, then chill for 1 hour.
2. Heat the grill to medium-high. Use an oil-soaked paper towel held with tongs to oil the grill grates.
3. Remove the chicken from the marinade, letting the excess liquid drip off. Grill the chicken until it is just cooked, about 1 minute per side. Transfer to a plate, cover with foil and let rest for 5 minutes.
4. Meanwhile, in a large bowl combine the arugula and the peaches. In a small bowl combine the yogurt, mayonnaise and blue cheese. Stir in enough water to achieve the desired consistency (about 1/3 cup), then season with salt and pepper. Add the dressing to the salad and toss well.
5. To serve, arrange one of the paillards on each serving plate and top with salad and nuts.



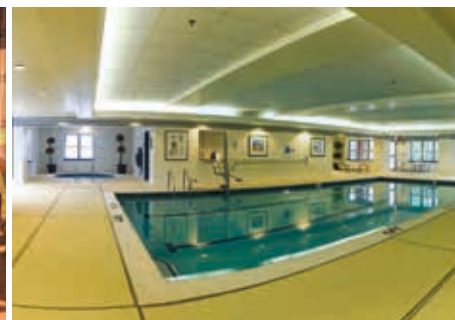
chefs in kent

Start to finish: 1 hour 20 minutes
(20 minutes active)

Makes 8 servings

"Moving to Maplewood was one of the smartest decisions I ever made."

Select Homes Available



Maplewood
PARK PLACE
Gracious Senior Living

- Superior Services
- Home Ownership
- Quality Healthcare
- And Much More

VOTED
"Best Senior Living Community"
by the Readers of *Bethesda Magazine*
for 8 consecutive years!

301-530-0500
9707 Old Georgetown
Road Bethesda, MD 20814
www.maplewoodparkplace.com



Prices Starting At \$349,900. Bridge Financing Available!



Family Owned and Operated Since 1945

Harvey W. Hottel, Inc.

Residential & Commercial
Heating • Air Conditioning • Plumbing • Geothermal
Spray Foam Insulation • Boilers

18900 Woodfield Rd., Gaithersburg, MD 20879,
Phone: (301) 921-9599
www.harveyhottel.com

save the date!

October 18th!

Networking Happy Hour!

When: Wednesday, October 18, 6:30 to 8:00 pm

Where: To be determined...

Who: Residents of Avenel, Bannockburn Estates, Chevy Chase Village, Kent, and Spring Valley **and** our business partners sponsoring our neighborhood magazines

Join us for this terrific networking opportunity to make connections both personally and professionally from among some of the areas most talented and connected business owners. For an invitation and event details, please email sarah.taylor@n2pub.com



Cool fall nights are
BETTER AT MILLIE'S

There's still time to enjoy Spring Valley's favorite patio!
JOIN US AT MILLIE'S DC THIS FALL FOR DINNER AND DELICIOUS COCKTAILS WITH FRIENDS AND FAMILY.

★ **MILLIE'S** ★

4866 MASSACHUSETTS AVE NW | (202) 733-5789 | MILLIESDC.COM | FOLLOW US ON INSTAGRAM: @MILLIESDC

making a difference

Commission On AGING

John P. Giacomini Was Recently Appointed By The Mayor To Serve As Commissioner For Ward 3

The goal of the Commission is to work with D.C.'s Office of Aging, and in that capacity to serve in an advisory role to the Director of the Commission, the Mayor and the Council of the District, on all matters that do or might impact our growing population of older adults, i.e., those over 60 years of age. That population is now more than 20% of the total population or more than 100,000. The Commission works to enhance the delivery of services and provides the best possible resources to support quality living conditions for older adults and, in general, strives to make a positive difference in the lives of older adults by helping to meet their various and growing needs. The Commission has 15 members who represent Wards 1 through 8. The Chairperson is Romaine Thomas of Ward 5 and the Vice Chairperson is Ron L. Swanda of Ward 6.

Commissioners assume the lead roles for these issues: Housing, Elder Abuse and Financial Exploitation, Health and Wellness, Transportation, Education and Employment, and Governance.

John P. Giacomini was recently appointed by the Mayor to serve as Commissioner for Ward 3. John has more than 15 years of experience working with older adults in his family, with relatives and friends, and in his many tasks for Iona Senior Services. He is on Iona's Board of Associates where is active on outreach

to congregations, and was Chair of Iona's Ward 3 Citizens Advisory Group. He has dealt with individuals with different conditions such as early onset Alzheimer's, Parkinson's, loneliness, memory loss, alcohol dependency, depression, and heart ailments. He has also assisted Iona with development, representation, communications, and encouraging the offering of confidential counseling services via congregations to those in need. He remains active with Palisades Village and serves on the Development Committee of his parish. John has worked in many sectors—public, private, universities, associations, non-profits, and has lived and served in 14 countries in Europe, the Far East, Canada, and Central and South America. He is a staff member of Capital City Nurses for companionship services and is on the Board of the Perry School Community Center. He lives in a Spanish speaking household.

Congratulations, John, on your appointment!



John (left) being sworn in as a Commissioner

What Is Your Family Breathing?

Bacteria? Pollen? Mold? Dustmites?

Air Duct & Vent Cleaning Reduces Dust, Odors & Contaminants

A Vent Expert, LLC, has certified inspectors who are concerned with your home's air quality and your family's health.

Let us put our 30+ years of experience to work for you.

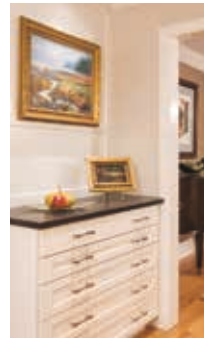


"Bringing Trust & Integrity Into Every Home We Serve"

www.aventexpert.com Established in 1977 301-838-0100

details, details, details...

We specialize in remodeling older homes to fit contemporary lifestyles. Because we offer architecture, interior design and construction under one roof, we are able to manage every detail of your project.



Architects & Builders in Chevy Chase

ARCHITECTURE INTERIOR DESIGN
CONSTRUCTION REMODELING
8555 Connecticut Ave. no. 200
Chevy Chase, MD
www.wentworthremodeling.com
240-200-0044

September local events



Mount Vernon's Colonial Craft Fair

SPORTS

Washington Nationals Baseball (Home games)
9/7,8,9,10,12,13,14,15,16,17,28,29,30

Washington Redskins (Home games)
9/10 vs. The Eagles
9/24 vs. The Raiders

CHARITY AND FUNDRAISING EVENTS

Walk Off Parkinson's, 9/24, Nationals Park
The family-friendly 1.5-mile self-paced walk at Nationals Park benefits the Parkinson Foundation of the National Capital (PFNCA). The event will include photo opportunities in the Nationals Dugout, exercise, yoga and dance demonstrations, children's activities and more.

Race to Beat Cancer, 9/16, Four Seasons Hotel
The 36th annual chipped 5k run/walk along the Potomac Parkway is a fun friends and family style event to raise money for cancer research! Families enjoy the kids 100-yard dash for children under 9 years old.

C&O Canal Trust's Seventh Annual Park After Dark fundraiser, 9/16 - 6p- 10p, Historical Great Falls Tavern. Promises great food by Corcoran Caterers, tasty libations, and delectable desserts, along with unique auction items, a visit from the Canal's mules, and a roaring camp fire.

The 2017 National Symphony Orchestra Season Opening Gala, 9/24, The Kennedy Center. Cocktails and dinner on the roof terrace level before the performance while dancing and dessert will follow the concert. All proceeds from the evening provide critical support for the Orchestra's many artistic, education, and community engagement programs throughout the year.

Washington DC Tour to Cure Bicycling Event-9/23. The ride starts and finishes at Freedom Plaza. Washington, DC. Bike across the nation's capital and help raise funds and awareness for the American Diabetes Association. All experience levels welcome. Routes include 13, 33 and 50 miles. To register and to learn more about the American Diabetes Association, visit <http://tour.diabetes.org>.

LABOR DAY WEEKEND EVENTS

National Hard Crab Derby, 9/1-4, Crisfield, Maryland. Enjoy crab races and contests, carnival rides, crafts, live entertainment, beauty pageants, parade, and fireworks.

47th Annual Labor Day Art Show, 9/2-4, Glen Echo Park, Spanish Ballroom

Irish Music and Dance Showcase, 9/4, Glen Echo Park, Bumper Car Pavilion

Virginia Scottish Games, 9/ 2-3, The Plains VA. Celebrate Alexandria's Scottish Heritage with live music and dance competitions, a British Car Show, children's games, Celtic crafts and foods.

Labor Day Concert, 9/3, U.S. Capitol, 8pm. Enjoy a free concert by the National Symphony Orchestra.

FREE EVENTS NEAR THE NEIGHBORHOOD

Car Seat Check, 9/23, 4900 Massachusetts Ave. - with vendor booths all related to Child Passenger Safety week. Spring Valley Pediatrics, Stork Childbirth Education, Bloom OB/GYN, Children's National Medical Center, SafeKids DC & Barre3.

Learn about Breast Health & Preventing Breast Cancer 9/26 6:30-8:00 pm at Bloom OB/GYN at 4001 Brandywine St. NW, Suite 300. A complimentary discussion from Dr. Rebecca Kaltman and Elizabeth Stark, Genetic Counselor at George Washington University Hospital. Refreshments by Myriad Genetics

OTHER EVENTS

Maryland Renaissance Festival, Through 10/22- Crownsville. A 16th century English village with crafts, food, live performances, games and lots more.

National Book Festival, 9/2, Washington Convention Center. Visit with more than 100 award-winning authors, illustrators and poets who will talk about and sign their books.

Annapolis Craft Beer and Music Festival, 9/16, Annapolis. This event features beer tastings, seminars, live music, food and arts and crafts exhibits.

Mount Vernon's Colonial Craft Fair -9/16-17, 9 a.m.-5 p.m. The fair is a re-creation of an early American marketplace with artist demonstrations, family entertainment and 18th-century amusements.

PERFORMING ARTS

The Kennedy Center

Washington National Opera: "Aida," 9/9-23. The timeless conflict of duty versus desire rises like a pyramid in Verdi's towering, impassioned epic. Featuring striking sets and costumes inspired by visionary artist RETNA, Aida is a love triangle for the ages, laid bare against the backdrop of two warring societies spinning out of control.

Arena Stage

"Native Gardens," 9/15-10/22. Good fences make good neighbors ... right? From the outrageous mind of playwright Karen Zacarias (Destiny of Desire) comes this hot new comedy about the clash of class and culture that pushes well-meaning neighbors over the edge.

Ford's Theatre

"Death of a Salesman," 9/22 -10/22. A Pulitzer Prize-Winning Classic about the Cost of the American Dream.

Give your kids an even **SMARTER SCHOOL YEAR!**

KUMON Where Smart Kids Get Smarter.

Kumon is the smartest extracurricular activity you can give your kids.

Enroll today & get a **\$30 Amazon.com Gift Card!***



Call us today to schedule a **Free Parent Orientation** to learn more:

Kumon Math and Reading Center of BETHESDA - BROOKMONT
4701 Sangamore Rd., Suite S151, Bethesda, MD 20816
301.272.2233 • kumon.com/bethesda-brookmont

©2016 Kumon North America, Inc. All Rights Reserved. Most Kumon Centers are independently owned and operated. *Amazon.com is not a sponsor of this promotion. Except as required by law, Amazon.com Gift Cards (GCs) cannot be transferred for value or redeemed for cash. GCs may be used only for purchases of eligible goods at Amazon.com or certain of its affiliated websites. For complete terms and conditions, see www.amazon.com/gc-legal. GCs are issued by ADI Gift Cards, Inc., a Washington corporation. All Amazon,™ ® are IP of Amazon.com, Inc. or its affiliates. No expiration date or service fees.

● BERKLEY • FOXHALL • KENT • PALISADES • SPRING VALLEY • WESLEY HEIGHTS ●

Fifth Annual
PALISADES VILLAGE HOUSE TOUR

Saturday,
October 14, 2017
 11:00 am – 4:00 pm

To learn more &
 purchase tickets, go to
www.palisadesvillage.org
 or call 202.244.3310.

Featuring Eight Homes
 exclusively in *Kent!*

COMPASS
 is proud to sponsor all eight
 homes on this year's house tour.



● PALISADES • SPRING VALLEY • WESLEY HEIGHTS ●

● BERKLEY • FOXHALL • KENT • PALISADES • SPRING VALLEY • WESLEY HEIGHTS ●

Real Estate RESOURCE



Featured properties may not be listed by the office/agent presenting this brochure.
 Source Multiple Listing Service. All information herein has not been verified and is not guaranteed.
 Sponsored by Susie Maguire Washington Fine Properties

Address	Neighborhood	List Price	DOM	Beds	Baths	Status
4900 PALISADES LN	KENT	\$1,650,000	3	4	4.5	
2960 UNIVERSITY TER	KENT	\$7,995,000	13	6	8	
5109 MANNING PL	KENT	\$1,449,000	13	4	3	
3125 CHAIN BRIDGE RD	KENT	\$3,999,000	20	7	6	
2964 UNIVERSITY TER	KENT	\$2,995,000	23	4	4	
3110 CHAIN BRIDGE RD	KENT	\$5,695,000	53	5	5.5	
2806 UNIVERSITY TER	KENT	\$3,185,000	59	6	6	
2946 CHAIN BRIDGE RD	KENT	\$3,995,000	79	5	5	
2911 UNIVERSITY TER	KENT	\$7,400,000	86	7	9	
5119 CATHEDRAL AVE	KENT	\$1,995,000	100	4	4.5	
2948 UNIVERSITY TER	KENT	\$4,500,000	95	6	6.5	
3006 ARIZONA AVE	KENT	\$2,500,000	97	5	4.5	
5181 WATSON ST	KENT	\$2,650,000	143	7	8	
4911 PALISADE LN	KENT	\$1,595,000	142	6	4.5	
5208 MACARTHUR TER	KENT	\$2,499,000	144	3	4	
3030 CHAIN BRIDGE RD	KENT	\$22,000,000	272	8	11.5	
5615 MACARTHUR BLVD	KENT	\$1,475,000	318	4	3.5	
5018 ESKRIDGE TER	KENT	\$3,495,000	230	5	6	

ANDREA JOSEPH

www.andreajosephphotography.com
 301.922.3446

202.944.5000

WASHINGTON FINE PROPERTIES WFP.COM

SUSIE MAGUIRE & WASHINGTON FINE PROPERTIES
 BREAKING RECORDS IN OUR NEIGHBORHOOD!

To achieve the highest sale for your home, call or email me for a confidential conversation.

SUSIE MAGUIRE
 202-841-2006
susie.maguire@wfp.com



THE KENT Connection

RESIDENT BUSINESS GUIDE

Attention Kent Residents: Do you own or run a business? To have your business featured free in the resident business guide in an upcoming issue of *The Kent Connection*, please send an e-mail to Sarah.Taylor@N2Pub.com. This is open to residents of Kent only.

CHILDBIRTH EDUCATION

Stork Childbirth Education

Inc.

Flynn O'Neill
info@storkchildbirthed.com
www.storkchildbirth.com

CULINARY

CulinAerie

Susan Holt
(202) 236-6111
www.culinaerie.com

FOOD

Banana Love Muffins

Debbi Minkoff Miller
www.bananalovemuffins.com

INTERIOR DECORATOR

Marcia Bogert Hayman, Inc.

Marcia Hayman
(202) 337-7788
marica@mbhinc.net

INTERIOR DESIGN

K. Browne Interiors

Kim Browne
(703) 675-5996
kbrowneinteriors.com

LEADERSHIP DEVELOPMENT

Faught Associates: The

Leader's Edge

Marsha Nelms Muawwad
(301) 466-3667
marsha@faughtassociates.com
www.faughtassociates.com

MARKETING/ADVERTISING

EmbroidMe Bethesda

Jeff Boden
(301) 656-5608
embroidme-bethesda.com

MEDICAL

A Doc At Your Door

June Castner
(202) 368-6788
junemd.com

PERSONAL CHEF

Cooking Your Way, LLC

Lauren Regardie
(202) 460-2654
cookingyourwayllc@gmail.com

PHOTOGRAPHY

Susan Strawbridge

Photography
Susan Strawbridge
(202) 537-6646
www.susanstrawbridge.com

PROPERTY MANAGEMENT

Tilton Berstein

Management

Richard Bernstein
(202) 232-5247
richard@tiltonberstein.com
www.tiltonberstein.com

REAL ESTATE

Jennie McDonnell/WC &

AN Miller/A Long and

Foster Company

Jennie McDonnell
(202) 744-7192
jenniemcdonnell.com

Sam Shebani/Central

Properties

Sam Shebani
(202) 573-7171
shebani@cpredc.com

Susie Maguire/Washington

Fine Properties

Susie Maguire
(202) 841-2006
susie.maguire@wfp.com

Toya Giacomini/WC & AN

Miller/A Long and Foster

Company

Toya Giacomini
(202) 236-1511
toyagiacomini.infre.com

TRAVEL

Vacations at Sea

Else Daniels
(202) 686-7447
elsedan@capaccess.com

TUTORING AND TEST PREP

Eagle Eye Tutoring

Tricia Duncan
(301) 312-8863
eagleeyetutoring.com

WORK SPACE

Writers Room DC

Charles Karelis
(202) 550-8049
info@writersroomdc.com
www.writersroomdc.com

No Metal,
No Problem!

We offer
metal-free
dental
implants!

Metal-free dental implants mean that no matter what your reasons, you can get dental implants that don't have any metal in them, and you don't have to sacrifice the high success rate of dental implants.

Experience The Dental Care You Want And Deserve!

REVIVE
TOTAL CARE DENTISTRY

Sedation For Sleep Dentistry • 1 Hour Cerec Crowns • Implants Start To Finish
Invisalign & Traditional Braces • ZOOM In-Office Whitening • Patients Of All Ages Welcome

Dr. Shila Yazdani & Dr. Michael Mortazie
202- 363-3399
ReviveMeToday.com
3301 New Mexico Ave. NW #108 Washington, DC 20016



feels good to be home

Home is where you feel relaxed, comfortable and safe. That's why you should choose GEICO to be your home for all your insurance needs.

Your GEICO Local Office could help you obtain coverage today for:

Renters

Homeowners

Condo



800-947-AUTO
geico.com
Local Office

GEICO Local Office

Some discounts, coverages, payment plans and features are not available in all states or all GEICO companies. Homeowners, renters and condo coverages are written through non-affiliated insurance companies and are secured through the GEICO Insurance Agency, Inc. GEICO is a registered service mark of Government Employees Insurance Company, Washington, D.C. 20076; a Berkshire Hathaway Inc. subsidiary. GEICO Gecko image © 1999-2017. © 2017 GEICO